

8TH LUX POLO CUP



LU LUXEMBOURG
LET'S MAKE IT HAPPEN

27-28 JUNE 2026

INTERNATIONAL POLO TOURNAMENT
6 POLO TEAMS - 6 NATIONS - 2 KIDS POLO TEAMS
100 HORSES - 9 POLO MATCHES



OUR PARTNER PHOENIX RENT

STOKR iko. GSCORE
next places

COPLANING Team Title Sponsors

PANOM nestwärme Time Keeper & Charity Partner

DLWI ESCALA 4 PULSE Business Network Partner
LUCC LBAN

Motor KALLE electra Partner PREMIUM

Register now for your Lunch & Dinner tickets: www.poloclub.lu
Roude Léiw Polo Club Asbl

Access: Follow "Roude Léiw Polo Club" on GoogleMaps
Free access, public bar, BBQ, animation for kids

AGENDA

Polo Umpire: Octavia Campbell-Davys
Polo Commentator: Alexander Schwarz
Official Tournament Time Keeper: PANOM
Event Catering: Come à la Maison

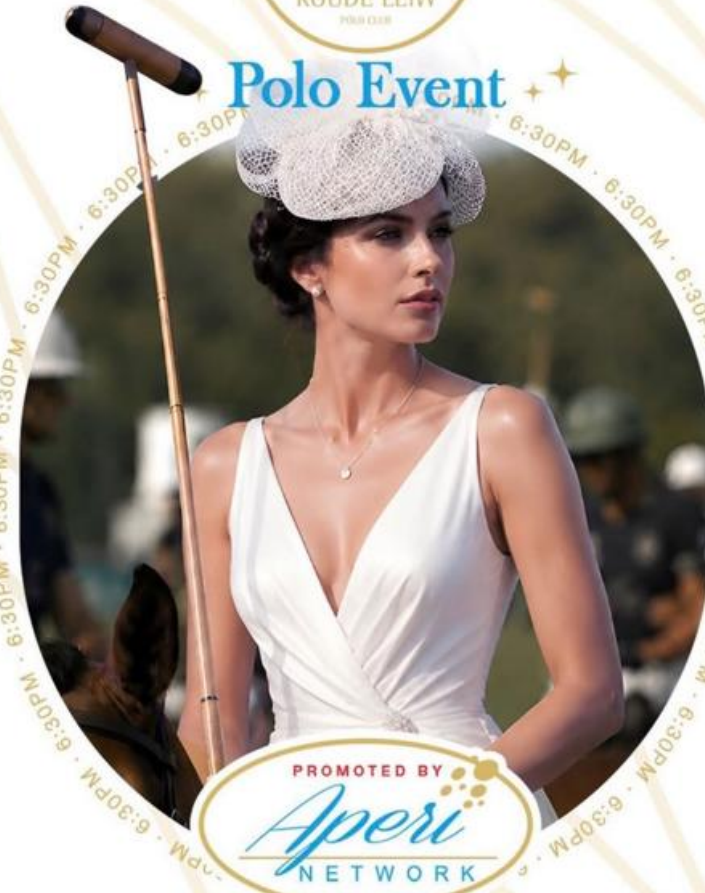
JUNE 27	12-7 PM	Lunch & Polo Matches
	5 PM	nestwärme Kids Polo Match
	7 PM	White Dinner at the Polo Club PANOM watch charity tombola "White Party with a touch of gold" with DJ
JUNE 28	11-4 PM	BBQ Brunch & Polo Matches
	2 PM	3rd nestwärme Kids Polo Cup
	3 PM	Final Polo Match
	4 PM	Prize Giving Ceremony

All weekend: KLOUD vet-set Horse & Player Encourager
COPLANING Kids Corner

★ SATURDAY ★
27 JUNE 2026



Polo Event



PROMOTED BY



CATERING BY

Come à la Maison
Italian beautyfood

WHITE DRESSCODE WITH GOLD TOUCH

nestwärme



polo cup 2026

A charity polo weekend in support of nestwärme



JUNE 27 | 28 JUNE

Experience an international polo weekend with charity highlights in support of nestwärme.

TOMBOLA

€20 per ticket available online



HIGHLIGHTS

- White Dinner at the Polo Club
- 6 polo teams, 100 horses
- White Party & DJ

Prizes

- PANOM watch
- Voucher + meet & greet with Léa Linster for 2
- 1-night stay for 2, Hotel Oranienburg, Vianden + dinner
- Custom illustration by Ricco Martini

"I am delighted, as president of nestwärme Luxembourg, that the donations will be allocated to the project of a child's hospice for families with seriously disabled children."



info@nestwaerme.lu 00352 20 60 09 33
In partnership with Roude Léiw Polo Club